

# Adobe® Photoshop® CS with Adobe® ImageReady® CS

## New Feature Highlights

---

### The professional standard in desktop digital imaging

#### About Photoshop CS

Adobe® Photoshop® CS with ImageReady® CS is the newest version of the industry standard and is part of the Adobe Creative Suite®. The Adobe Creative Suite is a complete design solution that provides today's creative professionals with the tools they need to create and publish content for print and the Web faster, more easily, and more affordably than ever.

Create the highest quality images, and manage your work more efficiently, with the new features and enhancements of Adobe® Photoshop® CS and its integrated Web production application, Adobe® ImageReady® CS. Get started faster, create outstanding results and work more productively than ever before, by more fully harnessing the power of the industry standard.

• **For All Photoshop CS and ImageReady CS Users**—More robust file management helps you efficiently search, sort and share your work. Customize keyboard shortcuts to suit the way you work. Add keywords and metadata to images in the enhanced File Browser, so the shots you need are never more than a search button away. Batch process images—including Camera Raw photos—into secure PDF presentations and interactive Web Photo Galleries for collaboration and feedback. Let the History Log track your work time for easier client billing and file audits. Enhanced scripting, built-in and customizable Help for common, complex tasks—these features and more combine to boost your efficiency in Adobe Photoshop CS.

• **For Photographers**—New tools, better features, richer images—Adobe Photoshop CS meets the needs of today's photographer for the highest quality images, with the finest possible control from the camera sensor to the final print. Work directly with the raw data from most major digital cameras, with comprehensive editing support for 16-bit color images. Monitor image changes as you make them with the new, always-available Histogram palette. Synchronize color across images effortlessly with Match Color. Modify image color without affecting texture and shading with the new Color Replacement tool. Use Shadow/Highlight correction to cure exposure problems while preserving midtones. New automation features include enhanced scripting, automatic Crop and Straighten and Photomerge, to reduce steps and get you closer to your goal faster than ever. New features like Lens Blur and Photo Filters allow you to create even more real world photographic effects inside Photoshop CS.

• **For Graphic Designers**—New additions and enhancements to help you save time. Use Layer Comps to quickly capture design variations within a single file, then instantly output alternates for client review. Create and manipulate fully editable text on any path, or inside any closed path, for eye-catching typographic designs. Organize your images with nested layer sets, and work with up to 56 channels per file in images up to 300,000 by 300,000 pixels—huge image support for billboards, bus wraps and more.

• **For Video and Film Professionals**—Remove the guesswork from designing for DVD, video and film, with images in any aspect ratio, in standard video sizes, with automatic action-safe and title-safe guides. And, take advantage of comprehensive 16-bit support for the rich color palette of film.

• **For Web Professionals**—Prepare Web graphics more quickly, easily and efficiently with Adobe ImageReady CS. The improved user interface features multiple object selection, manipulation, and grouping, with Smart Guides to facilitate object alignment. The new Web Content palette lets you create and edit interactive elements more intuitively, including easier remote rollovers and multiple slice sets. Export to Macromedia® Flash™ in one step with preserved vectors and dynamic text, including embedded fonts. Create leaner, more easily edited HTML, with new controls for nested tables, XHTML and more.

Optimized for the latest computer systems and more tightly integrated than ever before, Photoshop CS and ImageReady CS meet the needs of today's digital imaging professional, and answers the demands of tomorrow's.


## Top 10 New Features in Photoshop CS

- Enhanced File Browser (this page)
- Match Color (page 4)
- Histogram palette (page 5)
- Shadow/Highlight correction (page 5)
- Text on a Path (page 6)
- Integrated Camera Raw Support (page 4)
- Comprehensive 16-bit Image Support (page 5)
- Layer Comps (page 6)
- Macromedia® Flash™ (SWF) Export (page 8)
- Customizable Keyboard Shortcuts (page 3)

## Photoshop CS for All Users

No matter how you use Photoshop CS, you can take advantage of improved file management for increased productivity, with a more flexible File Browser to let you work the way you want, and new and better ways to track and securely share your work—Photoshop CS innovations and enhancements that save you time, by helping you start faster, and finish sooner.

### Enhanced File Browser

In Adobe Photoshop CS, the File Browser comes into its own as your digital imaging hub. With flags, keywords and editable metadata, you can now use the File Browser to quickly organize and locate the image assets you need. Perform batch procedures on groups of images without having to first open the image files in Photoshop. Customize the size of thumbnails and the layout of the window itself to suit your preferences. Choose whether to view folders and non-raster image files, such as Adobe PDF, Illustrator® CS and InDesign® CS documents—even whether to parse and display the metadata from within non-image files. Protect your work by instantly adding copyright and other personal information directly to the file metadata, carried with the images wherever they are sent. And with the new File Browser button  in the Options palette, you can instantly toggle the File Browser from full-screen to off-screen.

The built-in menubar lets you control enhanced File Browser functions and launch tasks on multiple images without first opening them in individual Photoshop windows.

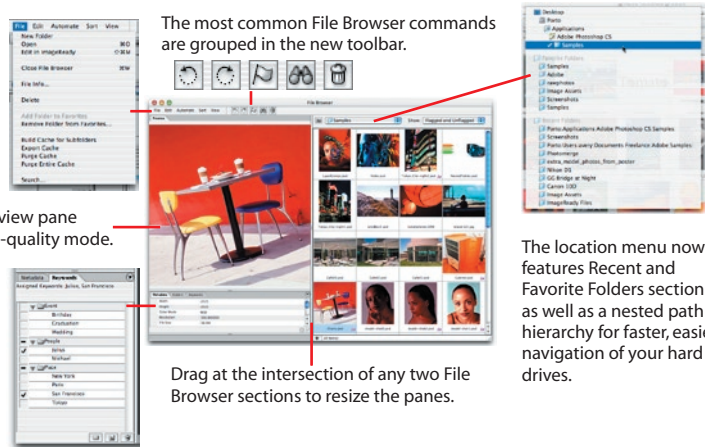
The most common File Browser commands are grouped in the new toolbar.

The resizable Preview pane with its new high-quality mode.


Quickly define and assign keywords and metadata to images in the File Browser, for local sorting, searching and organizing, and to ensure vital metadata stays with your images.


Drag at the intersection of any two File Browser sections to resize the panes.

The location menu now features Recent and Favorite Folders sections, as well as a nested path hierarchy for faster, easier, navigation of your hard drives.



Use the Automate menu to start a variety of automation functions directly from the File Browser.

**Browsing your way**—View new, high-quality preview images in the enhanced Preview pane, and adjust the custom thumbnail size to suit your own preference. File Browser panes can be reconfigured simply by dragging them to different locations, and your customized configurations can be saved as workspaces for easy access. Use the Search button  to quickly track down images based on filenames, metadata, and more.

**Organizing your way**—Create and edit metadata for individual or groups of files in the Metadata pane, or apply saved metadata to one or more images at once. Create and apply individual keywords or keyword sets to one or more files at once with the new Keywords pane. Use the new Flag button  to temporarily mark images for immediate action. You can then hide unflagged files to keep only the files you need visible, and easily find files on your system based on your assigned metadata, keywords, flags and more. Drag your image thumbnails around the window to arrange them in any order you choose. This digital lightbox arrangement is remembered as a custom view for each folder, until the order is changed by dragging images again. Easily create and access favorite folders in the File Browser folder tree and location pop-up menu, with automatic tracking of recently accessed folders.

**Working your way**—Perform batch and automation actions directly from the File Browser, including creating PDF Presentations, Picture Packages and Web Photo Galleries, using the sort order as currently displayed. Plus, you can open images from the File Browser directly into Photoshop CS, ImageReady CS, or even into Adobe Illustrator CS, InDesign CS or GoLive® CS.

### Easily Customize Your Keyboard Shortcuts

Assign new or redefine existing shortcuts to menu items, tools, and palette commands. Create sets of shortcuts and print copies for later reference. With Keyboard Shortcut Customization, your ideal shortcuts are a keystroke away.

### Quickly Create, View and Edit Custom File Information

Photoshop CS and ImageReady CS feature the new Adobe-standard File Info dialog box, using the XML-based XMP metadata format. You can now create and modify custom panels for the dialog, containing special metadata templates suited to your industry or company. You can also embed metadata in GIF, JPEG, and PNG files in ImageReady CS. To control file size increase, ImageReady CS allows you to control exactly what metadata is embedded, or to generate separate “sidecar” metadata files that won’t increase the downloadable byte count.

### Share Projects with PDF Presentations

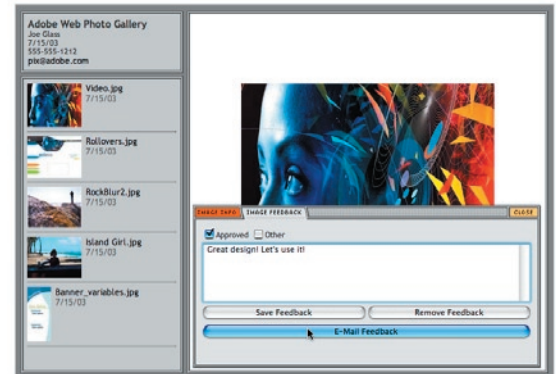
Easily bind multiple files into a single, multi-page Adobe PDF document, complete with optional page transitions and security. Preserve Photoshop CS-created notes in the PDF, and re-import multi-page PDFs with comments intact. PDF Presentations let you easily collect feedback from clients and colleagues, using Adobe Acrobat® or Photoshop CS. And, PDF files created in Photoshop CS take advantage of Adobe Picture Tasks technology, allowing you to extract individual images from the file, order prints online, and more.

### Collaborate with Web Photo Galleries

Photoshop CS features new, professionally designed Web Photo Gallery templates, including support for client feedback with no extra Web coding required.

### Enjoy Direct Access to Online Partners

Send your photos to online printing and sharing services, directly from Adobe Photoshop CS.



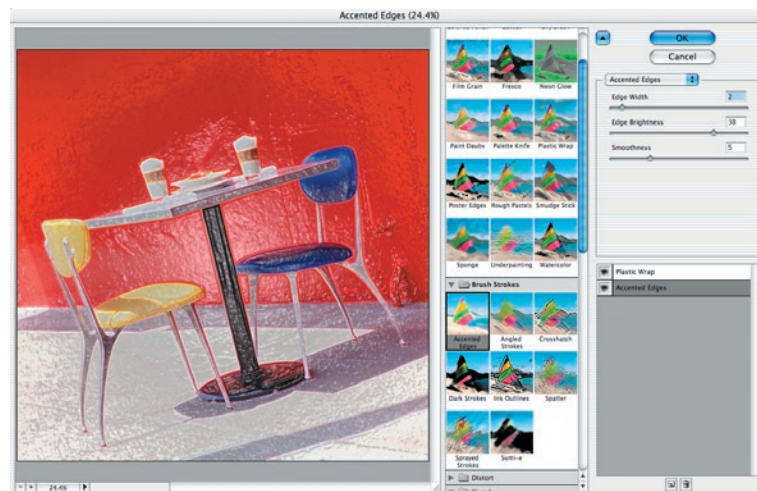
New interactive Web Photo Gallery templates allow you to easily collect feedback from clients by e-mail.

### Track Your Editing History

Save your editing history in an external History Log, in the metadata, attached to individual files, or both, in coarse or fine-grained detail. Save Sessions Only information if all you need is a record of Photoshop launch, quit and file open and close events. Save Concise information to add brief data for each step, as it appears in the History palette. Save Detailed information to record all detail for each step as it appears in the Actions palette.

### Easily Access and Use Multiple Filters

The new Filter Gallery brings Photoshop CS filters into a single, easy-to-use dialog. Now you can access, control and apply multiple filters at once, with a new, larger preview for easier planning of stacked filter effects.



The new Filter Gallery with its resizable preview pane lets you easily plan and apply a series of filters to an image.

## Enjoy Enhanced Scripting

Save time by automating repeated tasks with the enhanced scripting support in Photoshop CS. Using new built-in scripts, outputting multiple layers to individual files or saving Layer Comps as separate pages of an Adobe PDF file is as easy as a single menu command.

## Color Management Guidance

Quickly learn to take full advantage of powerful color management controls to set up your printers, monitors and other devices, for precise, consistent results, with easy access directly from the new Welcome Screen.

## Customize the Help Menu

In addition to help for specific tasks and quick access to the Photoshop CS user guide, the Help menu now contains focused how-to topics. Plus, customers, authors, and company trainers can create their own help topics and guides and have them appear in the Photoshop CS Help menu.



Photoshop CS and ImageReady CS each feature their own Welcome Screen to assist you in getting familiar with new features, extra resources and help.

## Welcome to Photoshop CS and ImageReady CS

Photoshop CS and ImageReady CS each present a Welcome screen at launch, designed for faster access to new features, tutorials, color management, informative movies and more.

## Photoshop CS for Photographers

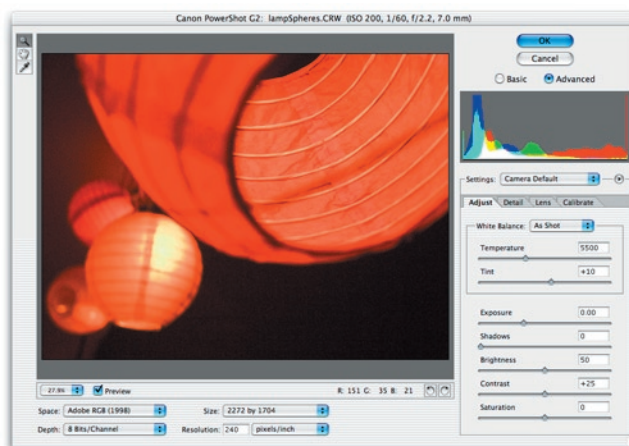
Adobe Photoshop CS gives photographers new tools and features that span the breadth of the digital photography workflow, so you can always achieve the highest quality images. Gain increased control and flexibility by working directly with raw camera data and 16-bit images. Work more efficiently, with always-on histograms and new features to trim steps from many editing tasks, including easily matching color across images and quickly enhancing under- or over-exposed photos.

## Match Colors Fast

The new Match Color feature reads the color statistics of one image or layer and applies them to another. It can be used to quickly achieve a consistent look in a series of shots, such as in fashion or commercial photography, or to match color schemes in photos shot under different lighting conditions, as well as to create artistic effects.

## Control Your Raw Camera Image Files

The second generation of the ground-breaking Camera Raw plug-in is now incorporated within Photoshop CS, allowing the direct manipulation of the raw data in most professional-grade digital cameras. The result is the



The Camera Raw window, with its new separate full-time histogram display, and advanced lens and calibration adjustment tabs.

ultimate control of image processing on import to Photoshop CS. Use the new color calibration controls to create customized profiles for specific camera models and to correct color shifts caused by unusual lighting situations. Adjust and apply Camera Raw settings to multiple images in the File Browser—these custom settings will be applied automatically when batch converting images. For example, you can apply one setting to a first group of images, a different setting to a second group, and then run a single action on both groups at once, knowing each group will be processed correctly.

## Supported Cameras

### Canon

- EOS-10D
- EOS-1Ds
- EOS-1D
- EOS-D60
- PowerShot 600
- PowerShot A5
- PowerShot A50
- PowerShot S30
- PowerShot S40
- PowerShot S45
- PowerShot S50
- PowerShot G1
- PowerShot G2
- PowerShot G3
- PowerShot Pro70
- PowerShot Pro90 IS

### Fujifilm

- FinePix S2 Pro

### Minolta

- DiMAGE 5
- DiMAGE 7
- DiMAGE 7i
- DiMAGE 7Hi

### Nikon

- D1
- D1H
- D1X
- D100
- Coolpix 5700
- Coolpix 5000 (with firmware v.1.7)

### Olympus

- E-10
- E-20
- C-5050 Zoom

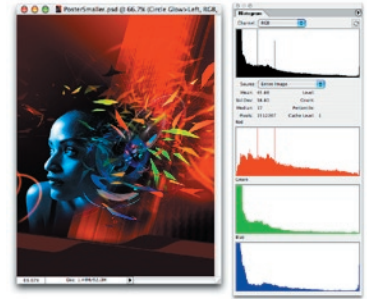


### Comprehensive 16-bit Editing

The core features in Photoshop CS now function on 16-bit images, including layers, painting, text, and shapes. Working with more data as you process your images results in richer color, more realistic highlights and shadows, and helps avoid image posterization.

### View Live Histograms as You Work

Monitor the changes in your image as you make them, with advanced live histograms displayed during any operation in Photoshop CS. You can also simultaneously display composite and individual channels, and before-and-after histograms, for maximum utility.



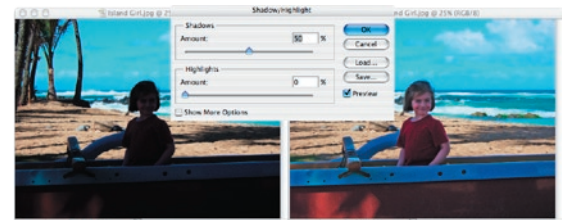
The Histogram palette in expanded view with color channel display.

### Automatically Crop and Straighten

Take the pain out of scanning multiple images with Crop and Straighten. Simply place one or more photos onto a scanner bed, scan them into Photoshop CS, then run Crop and Straighten to let Photoshop CS automatically copy each image into its own document and rotate it as necessary. You can also use Crop and Straighten to quickly and easily straighten existing single images.

### Easily Correct Exposure Problems

Improve the contrast of over- or underexposed digital images quickly and easily, while preserving the overall balance of your photo, using the new Shadow/Highlight adjustment.



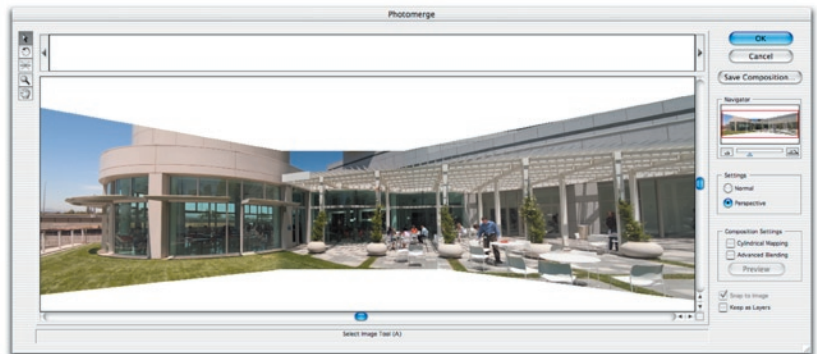
Shadow/Highlight correction quickly adjusts underexposed sections of an image without affecting correctly exposed areas.

### Create Lens Blur Effects

This new filter simulates real-world visual blurring phenomena where highlights take on the shape of the camera lens aperture. Lens Blur can be applied uniformly on an entire image or selection, or it can use a saved alpha channel as a depth map. By reading the grayscale values of a saved alpha channel, Lens Blur can determine how much each region should be affected.

### Create Panoramas Fast

The new Photomerge feature combines multiple images into seamless panoramas. The plug-in supports larger documents and advanced blending, and will optionally leave each image as a separate layer so they can be aligned by the plug-in and blended by hand.




Photomerge with perspective adjustment

### Simulate Photo Filter Effects

Simulating the effect of standard photographic lens filters, these new Photo Filters are easily applied as adjustment layers. The supplied set can be used as is, or filters can be customized with the standard Adobe color picker.

### Quickly Replace Color

Effortlessly change the color of any area of an image, while retaining the original texture and shading, with the new Color Replacement tool .



The Color Replacement tool paints the foreground color without affecting texture and shading.

### Customize Your Picture Packages

Picture Package gives you a variety of ways to easily combine multiple images, or multiple instances of one image, in a single print. For Photoshop CS, the Picture Package window now allows you to interactively edit existing layouts, making it easy to precisely control image position and spacing.

## Photoshop CS for Graphic Designers

Explore new possibilities and streamline your work with Photoshop CS innovations for graphic designers. Time-saving features help you meet and exceed client expectations more quickly and easily, including new typographic capabilities, support for huge documents, and the simple creation of alternate designs for client review.

### Create Alternate Designs in a Single Document

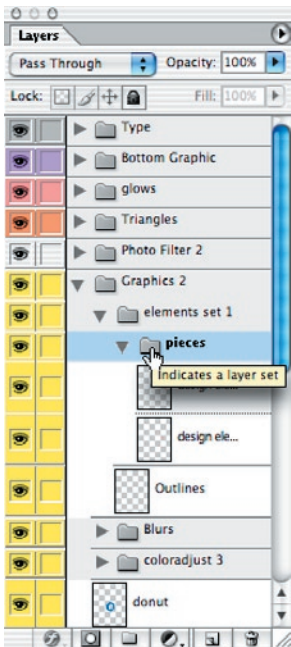
Recording any combination of layer visibility, position, blending options and effects, Layer Comps provide a fast, easy method of creating alternate designs for client review and decision. You can share your comps within the single, master Photoshop CS file, choose to output your comps as individual image files, or create a multi-page PDF with each comp as an individual page. In ImageReady CS, you can also use Layer Comps to quickly create a series of Web pages from a single master page design.



Layer Comps allow you to capture a series of alternate designs in a single Photoshop CS file, or quickly export them to separate files, a PDF Presentation, or an interactive Web Photo Gallery.

### Enjoy Nested Layer Sets

Perfect for complex multilayered designs, Photoshop CS lets you group your layers into nested layer sets up to five layers deep. You'll enjoy the benefits on export as well, with your nested layer sets recognized on import into Illustrator® CS.



Nested Layer Sets help you organize complex multilayered designs.

### Place Editable Text on a Path and In a Shape

The new text engine in Photoshop CS expands your typographic capability with the creation of fully editable type along a path or confined within a shape. And because Photoshop shares its text engine with Illustrator® CS, it's now possible to export editable type on paths, in shapes, and in paragraphs.



With Photoshop CS, type created on a path or enclosed within a shape remains fully editable on its own layer.

### Think Big with Huge Document Support

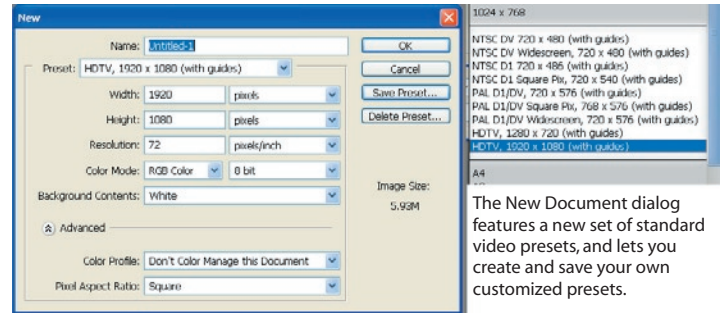
Photoshop CS brings support for the creation of images in sizes necessary for billboards, bus wraps, technical imaging, point-of-sale displays and more. Create images up to 300,000 by 300,000 pixels, with up to 56 channels per file.

## Photoshop CS for Video and Filmmakers

Photoshop CS removes the guesswork from designing for DVD, video and film, with new document presets in sizes geared to video and film, and with aspect ratios and color depths suited to motion graphics production.

### Create Non-Square Pixel Documents

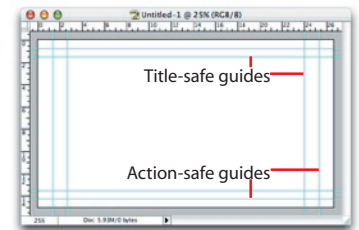
Photoshop CS adds support for non-square pixel documents, with easy creation of images in a variety of common and custom video formats. The New Document dialog features presets in standard video sizes, with advanced settings for fine control of aspect ratio. Creating your images in the correct aspect ratio means they are ready for use in dedicated video editing software, such as Adobe® Premiere® and Adobe® After Effects®.



The New Document dialog features a new set of standard video presets, and lets you create and save your own customized presets.

### Enjoy Automatic Action-safe and Title-safe Guides

The new video document presets automatically create action-safe and title-safe guides, making it easy to keep your images within the recommended design boundaries for any video display.



### Comprehensive 16-Bit Image Support

Enjoy more precise editing, matte painting, and compositing for film and video with comprehensive support of 16-bit images in the core features of Photoshop CS, including layers, brushes, texts, shapes and more.

### Use Pixel Aspect Ratio Correction to Adjust Your View

In a non-square document, Photoshop modifies the behavior and appearance of shapes, and gives you the Pixel Aspect Ratio Correction command to preview the image as it will be seen on screen in any format. Text, shapes and brushes in a non-square document would normally appear distorted when viewed on your computer monitor, so that a square object in a 2:1 Anamorphic document will appear as a rectangle twice as tall as it is wide. With Pixel Aspect Ratio Correction, you will see your non-square images displayed in the correct proportions, just as they will appear on an external video monitor.



Non-square pixel images appear distorted on a computer screen, but can be viewed normally on an external video monitor.

Pixel Aspect Ratio Correction lets you create and work with your non-square image, while viewing it as it will appear on your final display.

### Easily Export Layers to Files

Integrate your layered Photoshop CS artwork more efficiently with a variety of editing and compositing systems, by saving the layers in your document as individual images in video-friendly formats.

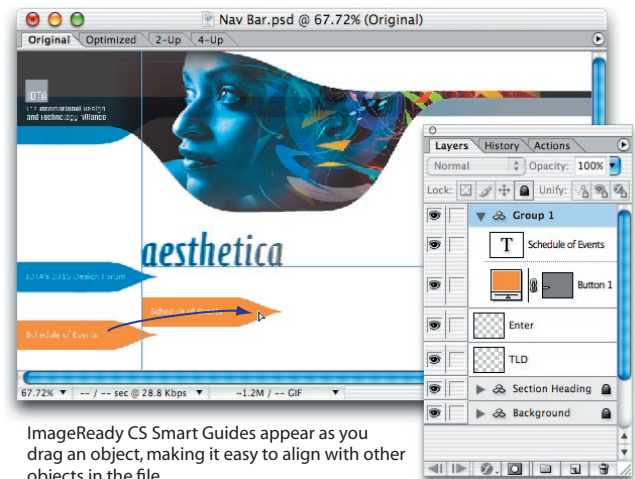


## ImageReady CS for Web Professionals

Adobe ImageReady CS enhancements begin with the redesigned user interface specifically tuned to the needs of Web professionals, to let you prepare Web graphics more quickly, easily and efficiently than ever before. Plus, ImageReady CS brings enhanced HTML output, smoother integration with HTML editors and other Web authoring software, and new features and palettes that give you even greater flexibility and control.

### Enjoy a Web-Focused Interface

As a Web professional, you spend much of your time creating and manipulating small elements such as buttons and text objects, which is why Adobe ImageReady CS now features a more focused and flexible, web-focused user interface. You can now easily select, manipulate and copy multiple objects on the canvas, instantly group selected objects, and create nested object groups up to five levels deep. Layer commands can be executed over multiple layers, font settings of multiple type objects can be modified simultaneously, and new automatic Smart Guides help you quickly align objects while dragging.



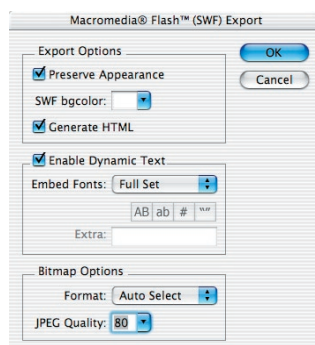
ImageReady CS Smart Guides appear as you drag an object, making it easy to align with other objects in the file.

### Smoother Integration with Photoshop CS

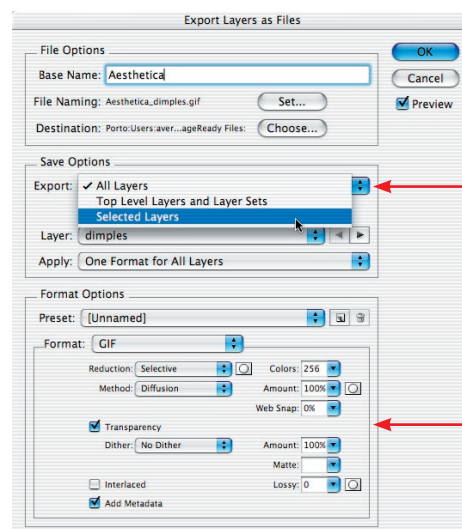
When you hand off your image documents between the applications, only changes to the files are exchanged, for faster jumps. ImageReady CS and Photoshop CS also now share CPU optimization routines, for peak performance with the latest PowerPC G4, G5 and Pentium 4 processors.

### Easily Export to Flash (SWF)

Because Macromedia Flash software does not support the import of layered Photoshop documents, getting a 20-layer Photoshop PSD file into the Flash (SWF) authoring environment formerly required up to 150 steps. ImageReady CS cuts that process down to just two steps—exporting the layers as SWF files, and then importing the SWF files as Flash (SWF) layers. ImageReady CS preserves exported vector objects and text as SWF-native text and vectors, and can also preserve the appearance of complex vectors by rasterizing when necessary, as you choose.



ImageReady CS features one-step export directly to Flash (SWF), complete with embedded fonts and HTML generation, for simple import to Flash (SWF) authoring software.



Choose which layers to export

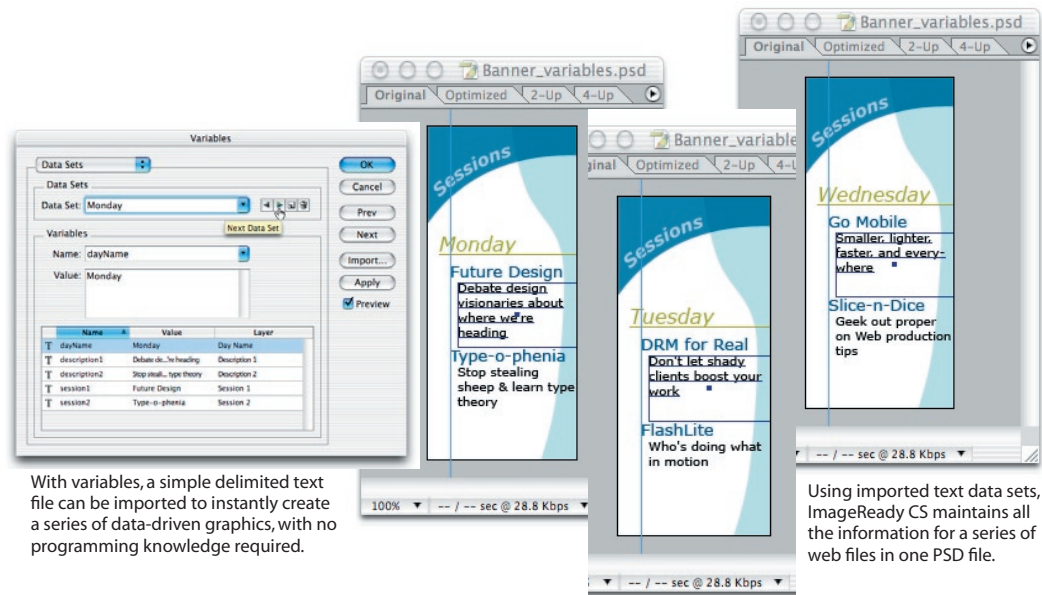
Choose specific format options for all layers, or fine tune separate options for each individual layer exported.

Export layers quickly to individual files, with advanced options to control the formatting of output files.



## Create Dynamic Content Fast with Variables and Data Sets

Defining variables and populating them in your images with data sets means you can quickly create dynamic Web sites without programming. Data sets can be imported from spreadsheets and databases as tab-delimited or comma-delimited text files. Output one image or a set of slices for each data set, to quickly batch-create a set of images, or create a series of images by simply editing the text in the resulting HTML. Variables allow dynamic text to also be included in ImageReady SWF files, including embedded fonts, unlocking the power of SWF variables for non-programmers. A Web site or even a single HTML page can contain multiple instances of a SWF, each containing different variable content. A site visitor then needs to download only one asset instead of multiple GIF or JPEG files. The result is a leaner, lighter site that is graphically rich, but can be updated with a simple text editor.



With variables, a simple delimited text file can be imported to instantly create a series of data-driven graphics, with no programming knowledge required.

Using imported text data sets, ImageReady CS maintains all the information for a series of web files in one PSD file.

## Enjoy Enhanced Automation with Conditional Actions

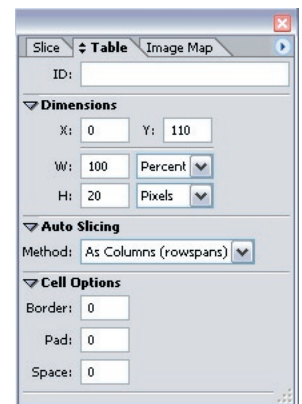
Using the "Insert a Step" button in the Actions palette, conditional logic can now be inserted in ImageReady CS actions. With conditional logic, ImageReady CS will scan for certain image characteristics (aspect ratio, dimensions, filename, etc.) and perform a step only if the characteristics match the setting in the step.

## Quickly Export to Multiple Files

Save individual layers or layer sets as separate files, with all layers exported as one format per document, or with a different format for each layer. Exporting each layer to its own SWF file allows each file to then be opened in Flash as its own symbol on its own layer. Multiple files also make it easier to create layered HTML compositions using Cascading Style Sheets.

## Output Enhanced HTML

ImageReady CS now lets you designate individual table cells by pixels or percent, for designs that can flex in a Web browser. Slicing can be set to favor colspan or rowspan, and selected slices can be combined into nested tables, quickly generating HTML that will be easier to hand edit. ImageReady CS also allows you to ensure long-term code compatibility by exporting standards-compliant XHTML code with the setting of a single preference.



New slicing method and cell dimension options are conveniently accessible in the enhanced Table palette.

## System Requirements

### Macintosh

- PowerPC® processor (G3, G4 or G5)
- Mac OS® X 10.2.4, 10.2.5, 10.2.6, 10.2.7
- 192 MB of RAM (256 MB recommended)
- 320 MB of available hard disk space
- Color monitor with 16-bit or greater video card
- 1024x768 or greater monitor resolution
- CD-ROM drive

### Windows

- Intel® Pentium® III or 4 processor
- Microsoft® Windows® 2000 with Service Pack 3 or Windows XP
- 192 MB of RAM (256 MB recommended)
- 280 MB of available hard disk space
- Color monitor with 16-bit or greater video card
- 1024x768 or greater monitor resolution
- CD-ROM drive
- Internet or phone connection required for product activation

### Estimated Street Price

\$649 (U.S.)

### Estimated Street Price for Upgrades

\$169 (U.S.)

### Expected Availability

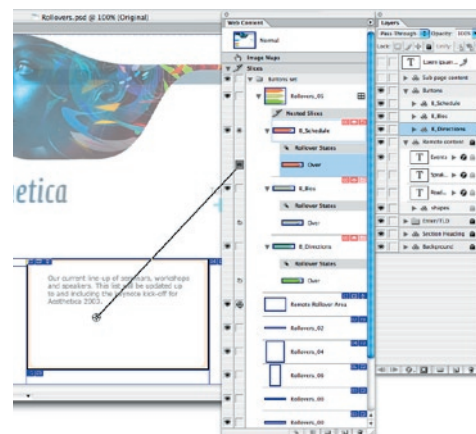
Fourth Quarter 2003

## Work Faster with the New Web Content Palette

Create and edit interactive elements more easily with the new Web Content palette. Fine tune your control over remote rollover slices with the new point-and-shoot targeting system. Create multiple slice sets in a single document, and combine slice sets and layer comps to quickly switch among and export different document configurations. Set slices to invisibility to prevent their output to HTML without deleting the slices themselves.

## Easily Export Multiple Files From Selected States

Instantly create separate HTML pages for each selected state, by outputting multiple files for slices containing selected states. This new capability of ImageReady CS makes quick work of designing web pages where different images are displayed in the same area by the state of different rollovers.



Create remote rollovers quickly and easily with the point and shoot targeting system in the new Web Content palette.

## Adobe Creative Suite

Adobe Photoshop CS with ImageReady CS is a part of the Adobe Creative Suite. The Adobe Creative Suite combines full, new versions of Adobe Photoshop CS with ImageReady CS, Adobe Illustrator CS, Adobe InDesign CS, Adobe GoLive CS, and Adobe Acrobat 6.0 Professional with the innovative new Version Cue file version manager, which lets you easily track iterations and quickly locate files. The Adobe Creative Suite is a complete design solution that gives today's creative professionals everything they need to create and publish content to print and the Web faster, more easily, and more affordably than ever. Estimated Street Price \$1299 (U.S.) Creative Suite Premium Edition, \$999 (U.S.) Creative Suite Standard edition. Estimated Street Price for Upgrades to Premium Edition \$749 (U.S.) from Adobe Photoshop or from the Adobe Web, Design, Publishing, or Video Collection. Estimated Street Price for Upgrades to Standard Edition \$549 (U.S.) from Adobe Photoshop or from the Adobe Web, Design, Publishing, or Digital Collection.

## About Adobe Systems Incorporated

Founded in 1982, Adobe Systems Incorporated ([www.adobe.com](http://www.adobe.com)), the leader in digital imaging software, offers a comprehensive line of products for enterprise and creative professional customers. Its products enable customers to create, manage and deliver visually rich, compelling and reliable content. Based in San Jose, Calif., Adobe is one of the world's largest software companies.